



SCHACKER REALTY

**73,445 sq. ft. of Office Space For Lease**

**Minimum Division 1,000 sq. ft.**

**26 Harbor Park Dr, Port Washington**



### **Pricing and Timing:**

**Lease Price: Negotiable**

**This building has a wealth of amenities including a data center, cafeteria, gym, mail room, reception area and storage space**

**For more information please contact: Schacker Realty 631-293-3700 [info@schackerrealty.com](mailto:info@schackerrealty.com)**

All information is subject to errors, omissions, modification, and withdrawal.

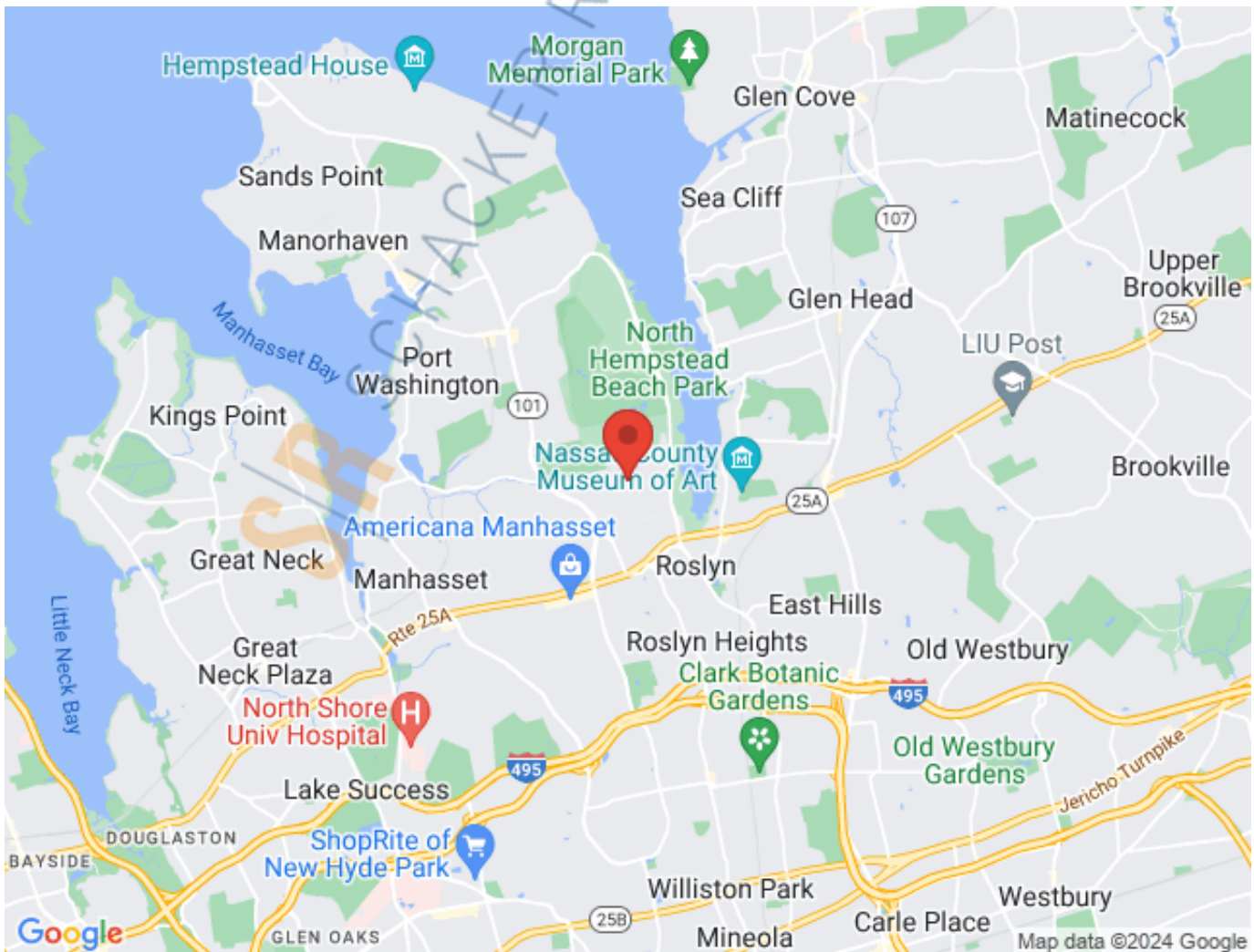
Measurements may be estimates and information shown should not be relied upon without independent verification.

This advertisement does not suggest that the broker has a listing or has done a transaction in this property or properties.



SCHACKER REALTY

26 Harbor Park Dr, Port Washington



**For more information please contact:** Schacker Realty 631-293-3700 [info@schackerrealty.com](mailto:info@schackerrealty.com)

All information is subject to errors, omissions, modification, and withdrawal.

Measurements may be estimates and information shown should not be relied upon without independent verification.

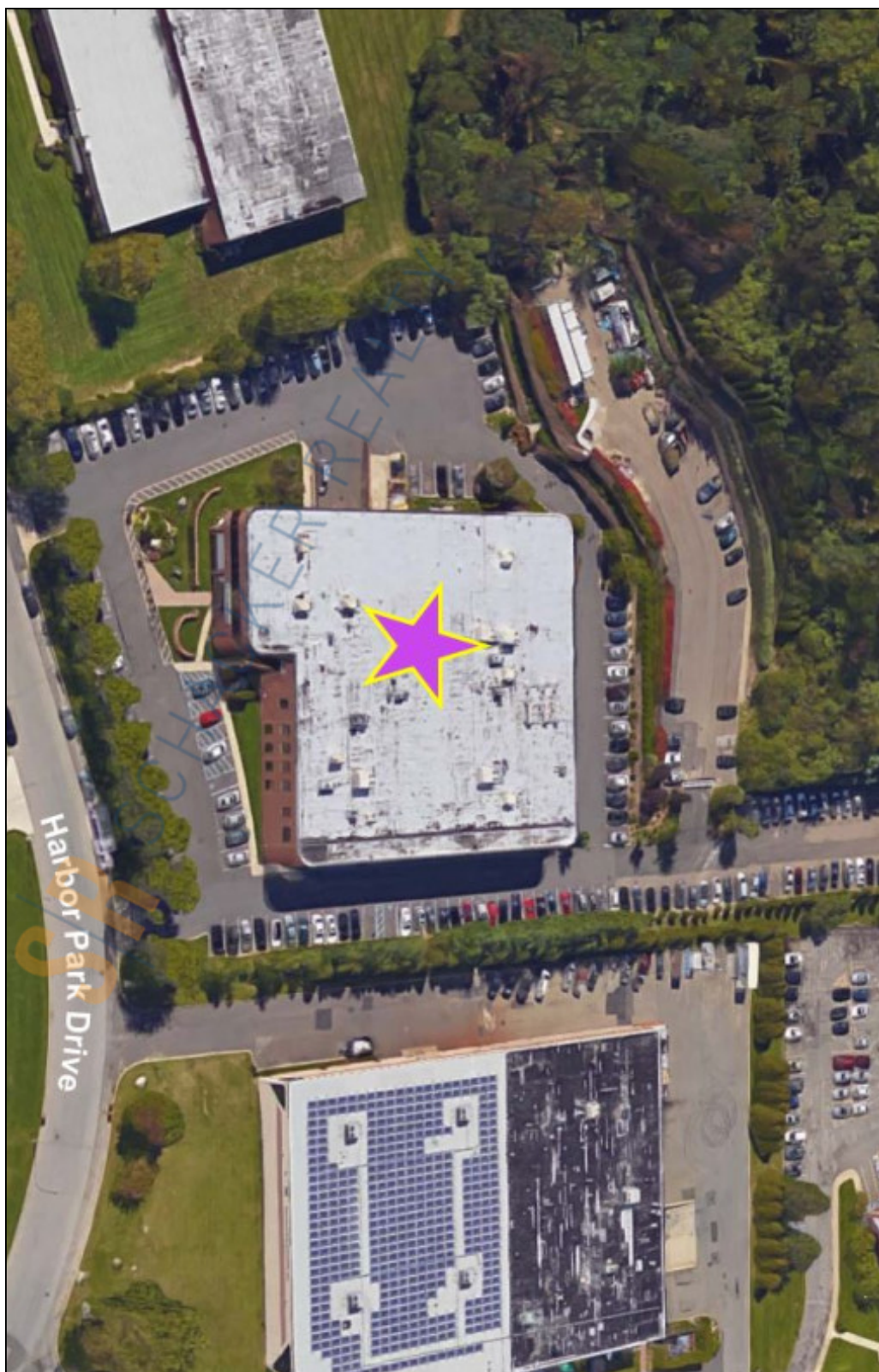
This advertisement does not suggest that the broker has a listing or has done a transaction in this property or properties.





SCHACKER REALTY

26 Harbor Park Dr, Port Washington



**For more information please contact:** Schacker Realty 631-293-3700 [info@schackerrealty.com](mailto:info@schackerrealty.com)

All information is subject to errors, omissions, modification, and withdrawal.

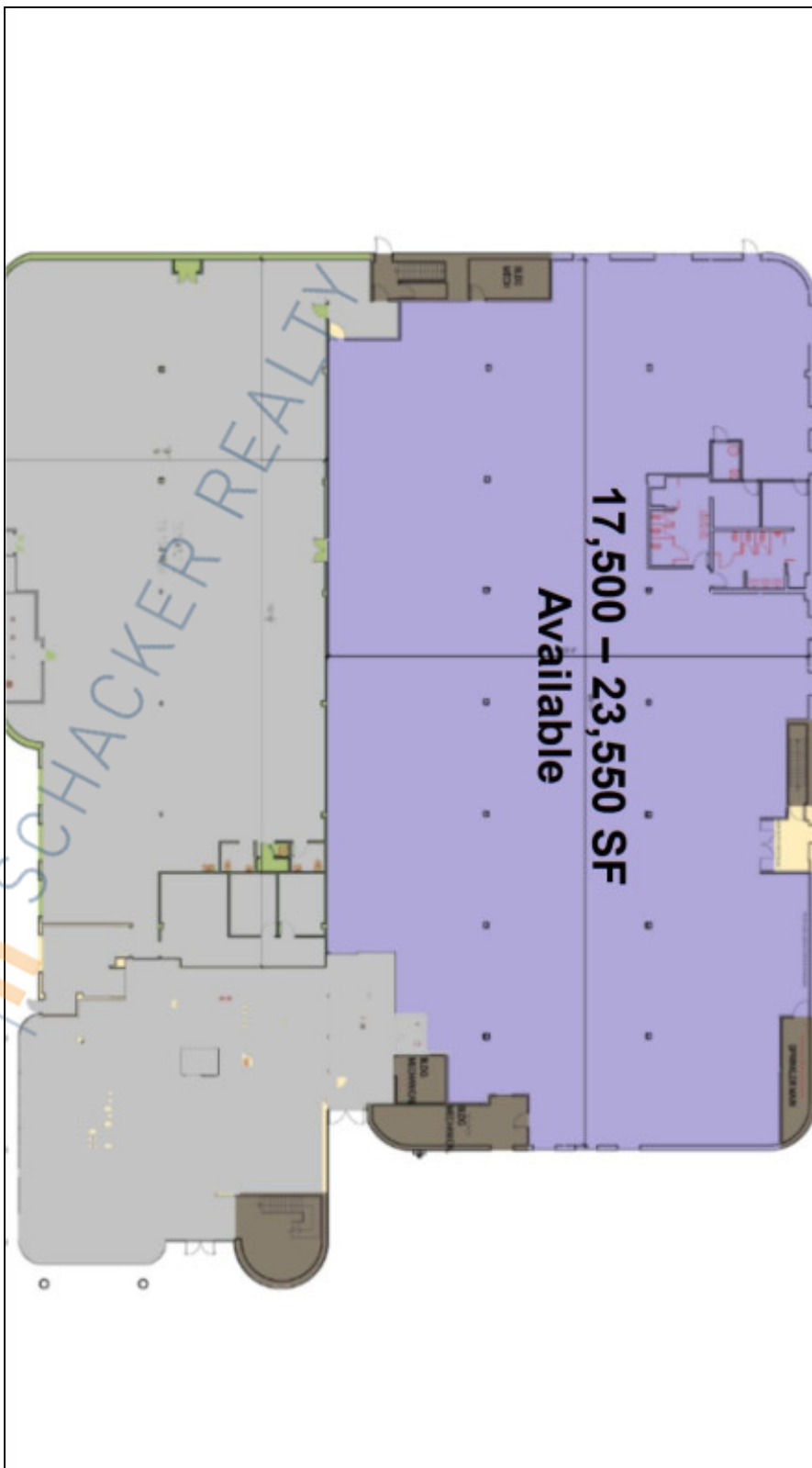
Measurements may be estimates and information shown should not be relied upon without independent verification.

This advertisement does not suggest that the broker has a listing or has done a transaction in this property or properties.



SCHACKER REALTY

26 Harbor Park Dr, Port Washington



**For more information please contact:** Schacker Realty 631-293-3700 [info@schackerrealty.com](mailto:info@schackerrealty.com)

All information is subject to errors, omissions, modification, and withdrawal.

Measurements may be estimates and information shown should not be relied upon without independent verification.

This advertisement does not suggest that the broker has a listing or has done a transaction in this property or properties.