



SCHACKER REALTY

## 3,672 sq. ft. of Industrial Space For Lease 1730-1746 Church St, Holbrook



### Specifications:

**Building Size:** 44,945 sq. ft.  
**Lot Size:** 3.10 Acres  
**Office Space:** 20%  
**Ceiling Height:** 16.0'  
**Loading:** 1 Drive-in(s)  
**Power:** 200 amps  
**A/C:** Offices Only  
**Parking:** Ample

### Pricing and Timing:

**Occupancy:** Immediately  
**Lease Price:** \$18.00/sq. ft.  
Modified gross

Suite 1744 • 3,672 sf industrial space and 20% office • Lighted tenant directory • Street side unit • Located one block off Vets Hwy & Sunrise Hwy

**For more information please contact:** Schacker Realty 631-293-3700 [info@schackerrealty.com](mailto:info@schackerrealty.com)

All information is subject to errors, omissions, modification, and withdrawal.

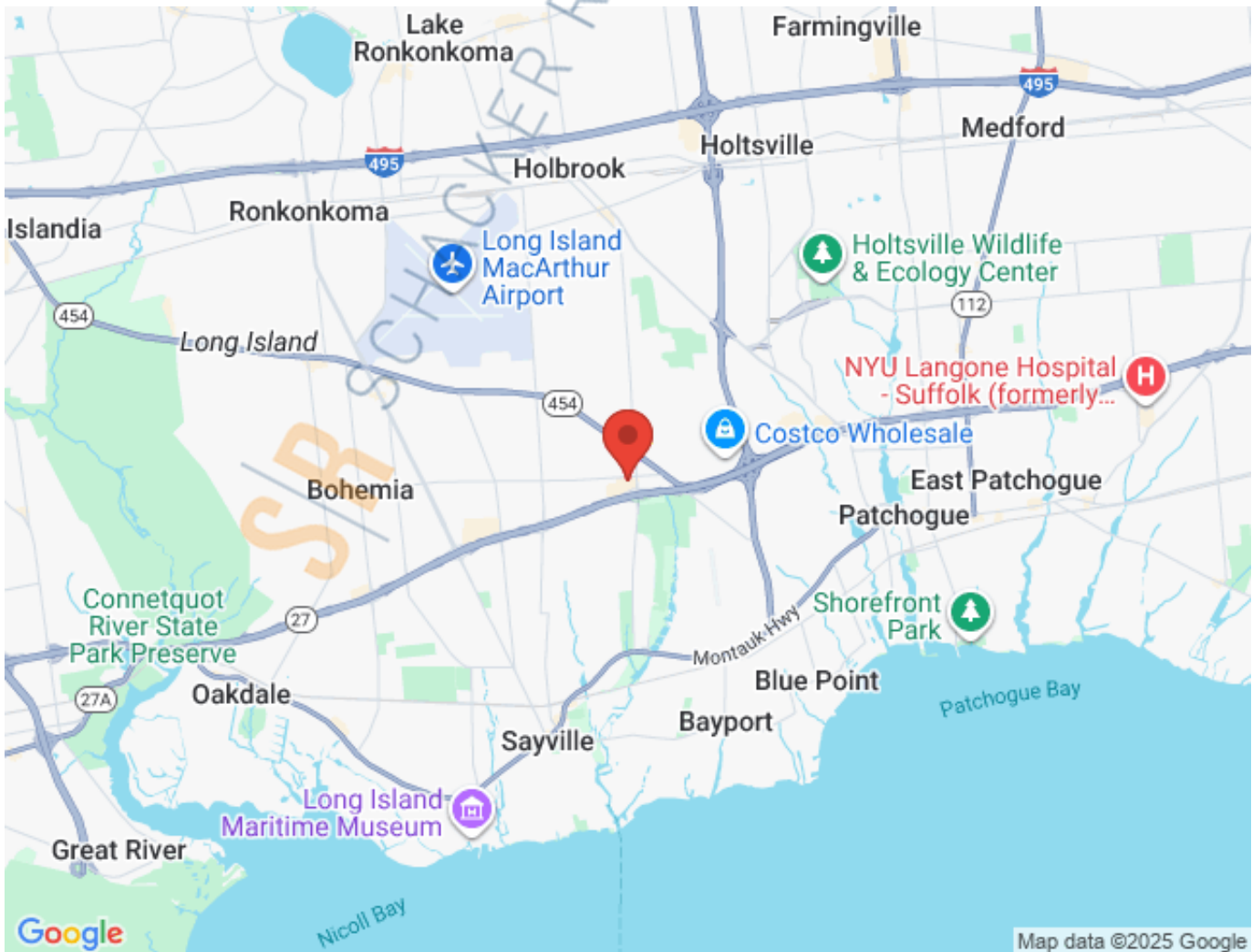
Measurements may be estimates and information shown should not be relied upon without independent verification.

This advertisement does not suggest that the broker has a listing or has done a transaction in this property or properties.



SCHACKER REALTY

1730-1746 Church St, Holbrook



**For more information please contact:** Schacker Realty 631-293-3700 [info@schackerrealty.com](mailto:info@schackerrealty.com)

All information is subject to errors, omissions, modification, and withdrawal.

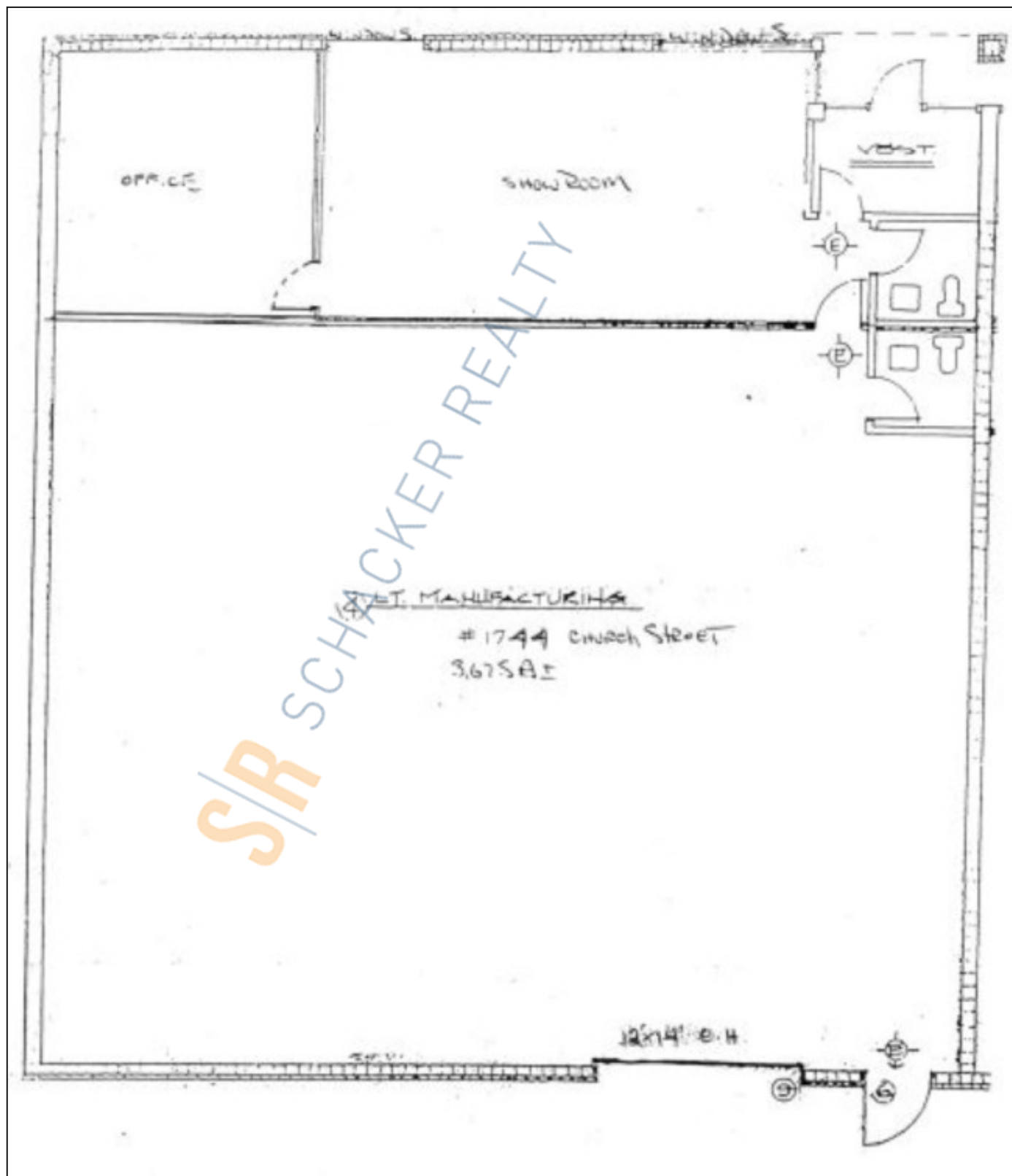
Measurements may be estimates and information shown should not be relied upon without independent verification.

This advertisement does not suggest that the broker has a listing or has done a transaction in this property or properties.



SCHACKER REALTY

1730-1746 Church St, Holbrook



**For more information please contact:** Schacker Realty 631-293-3700 [info@schackerrealty.com](mailto:info@schackerrealty.com)

All information is subject to errors, omissions, modification, and withdrawal.

Measurements may be estimates and information shown should not be relied upon without independent verification.

This advertisement does not suggest that the broker has a listing or has done a transaction in this property or properties.