



SCHACKER REALTY

## 5,924 sq. ft. of Industrial Space For Lease

### 41 Heisser Ln, Farmingdale



#### Specifications:

**Building Size:** 60,000 sq. ft.  
**Lot Size:** 2.50 Acres  
**Office Space:** 800 sq. ft.  
**Ceiling Height:** 14.6'  
**Loading:** 1 Drive-in(s)  
**Power:** 480 amps  
**A/C:** Offices Only  
**Sewers:** Yes

#### Pricing and Timing:

**Occupancy:** Immediately  
**Lease Price:** \$9,550.70 Per  
Month Mod Gross

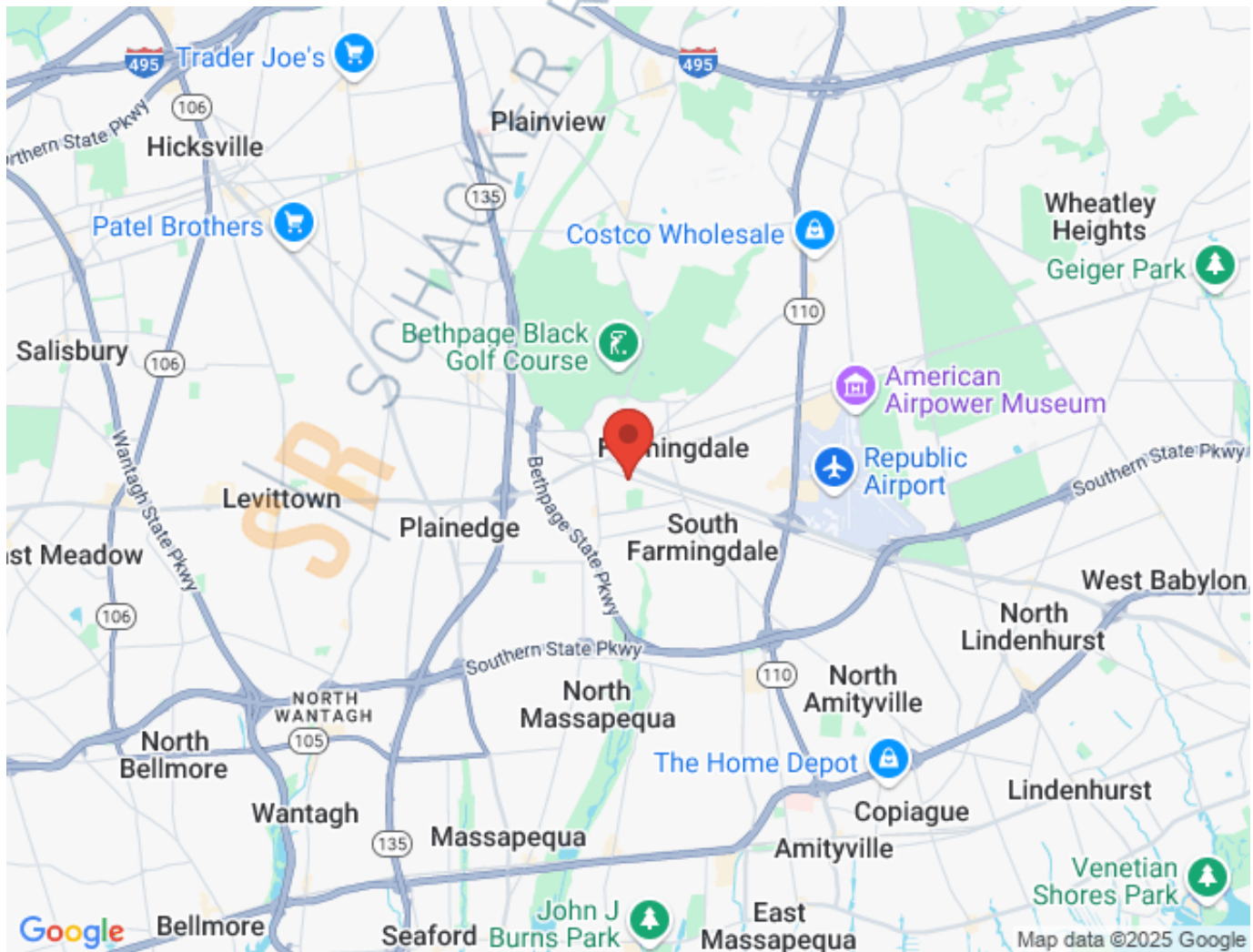
**Suite 23** • This unit features a reception area, one office with large windows and a private bathroom, a large kitchen/rec room, and an employee bathroom • Office area is serviced by HVAC, both heat and AC • Private 24/7 parking • Located minutes from Rte 110, Southern State Pkwy, LIE, and Northern State Pkwy

**For more information please contact:** Schacker Realty 631-293-3700 [info@schackerrealty.com](mailto:info@schackerrealty.com)

All information is subject to errors, omissions, modification, and withdrawal.

Measurements may be estimates and information shown should not be relied upon without independent verification.

This advertisement does not suggest that the broker has a listing or has done a transaction in this property or properties.

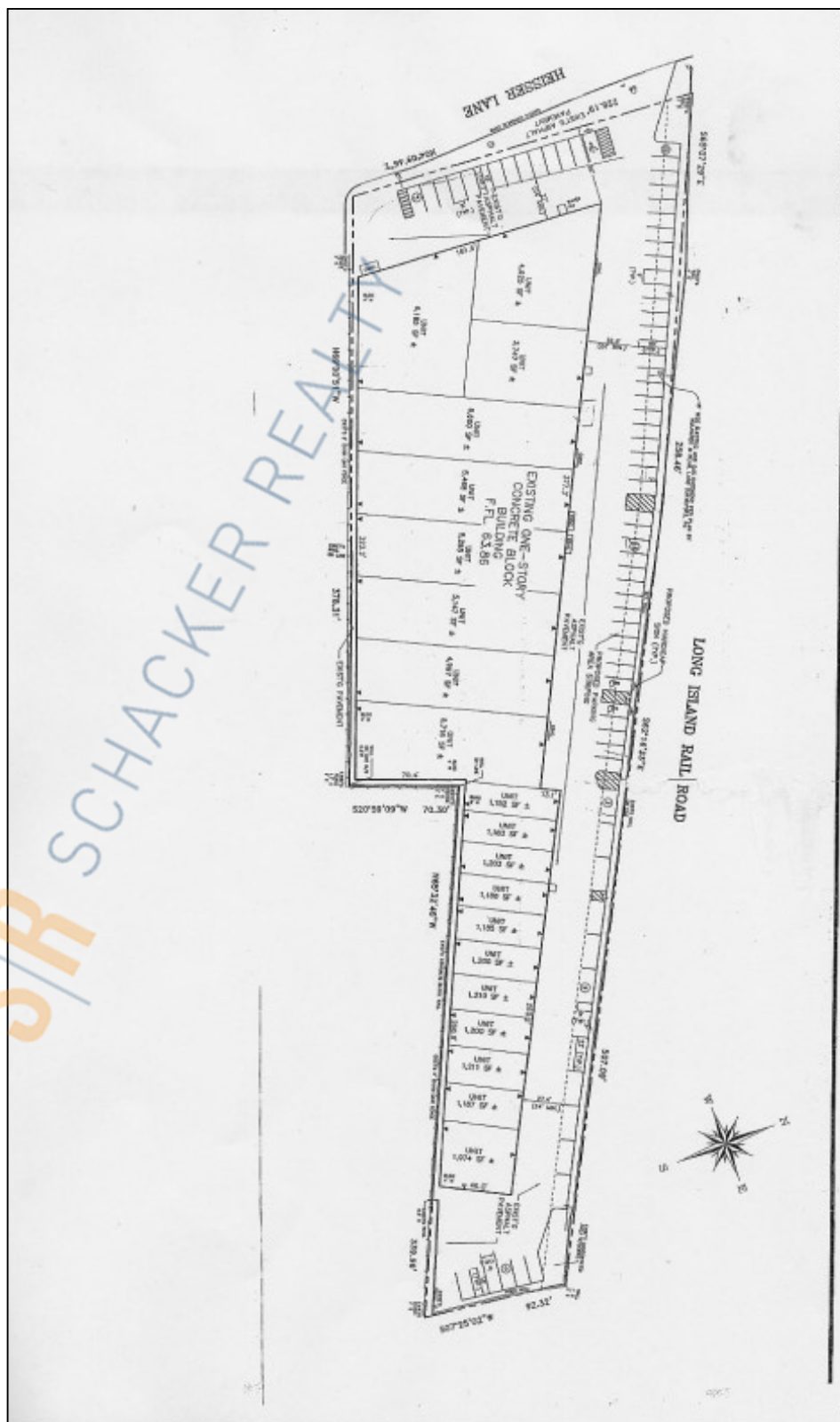


**For more information please contact:** Schacker Realty 631-293-3700 [info@schackerrealty.com](mailto:info@schackerrealty.com)

All information is subject to errors, omissions, modification, and withdrawal.

Measurements may be estimates and information shown should not be relied upon without independent verification.

This advertisement does not suggest that the broker has a listing or has done a transaction in this property or properties.



**For more information please contact:** Schacker Realty 631-293-3700 [info@schackerrealty.com](mailto:info@schackerrealty.com)

All information is subject to errors, omissions, modification, and withdrawal.

Measurements may be estimates and information shown should not be relied upon without independent verification.

This advertisement does not suggest that the broker has a listing or has done a transaction in this property or properties.