



SCHACKER REALTY

## 2,500 sq. ft. of Industrial Space For Lease

### 1363 Lincoln Ave, Holbrook



#### Specifications:

**Building Size:** 37,632 sq. ft.  
**Lot Size:** 4.34 Acres  
**Office Space:** 15%  
**Ceiling Height:** 20.0'  
**Loading:** 1 Drive-in(s)  
**Power:** 200 amps  
**A/C:** Full A/C  
**Parking:** 3:1000

#### Pricing and Timing:

**Occupancy:** 4/1/2025  
**Lease Price:** \$15.12/sq. ft. Ind  
Gross

**Suite 2 • Minutes from Sunrise Highway, Veterans Highway, Mac Arthur Airport and the LIE •**  
**Doorstep parking / seven day, 24-hour access**

**For more information please contact:** Schacker Realty 631-293-3700 [info@schackerrealty.com](mailto:info@schackerrealty.com)

All information is subject to errors, omissions, modification, and withdrawal.

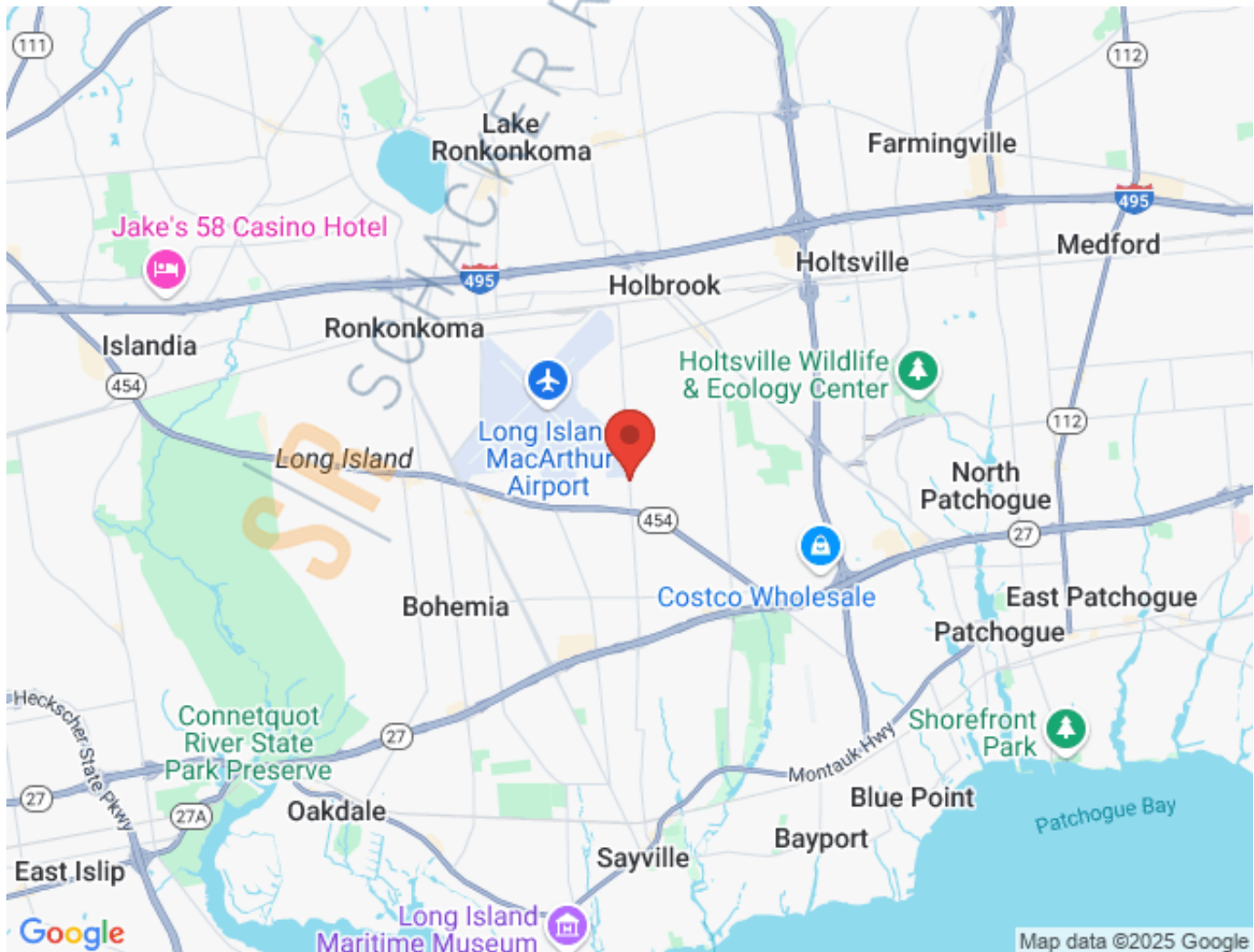
Measurements may be estimates and information shown should not be relied upon without independent verification.

This advertisement does not suggest that the broker has a listing or has done a transaction in this property or properties.



SCHACKER REALTY

1363 Lincoln Ave, Holbrook



**For more information please contact:** Schacker Realty 631-293-3700 [info@schackerrealty.com](mailto:info@schackerrealty.com)

All information is subject to errors, omissions, modification, and withdrawal.

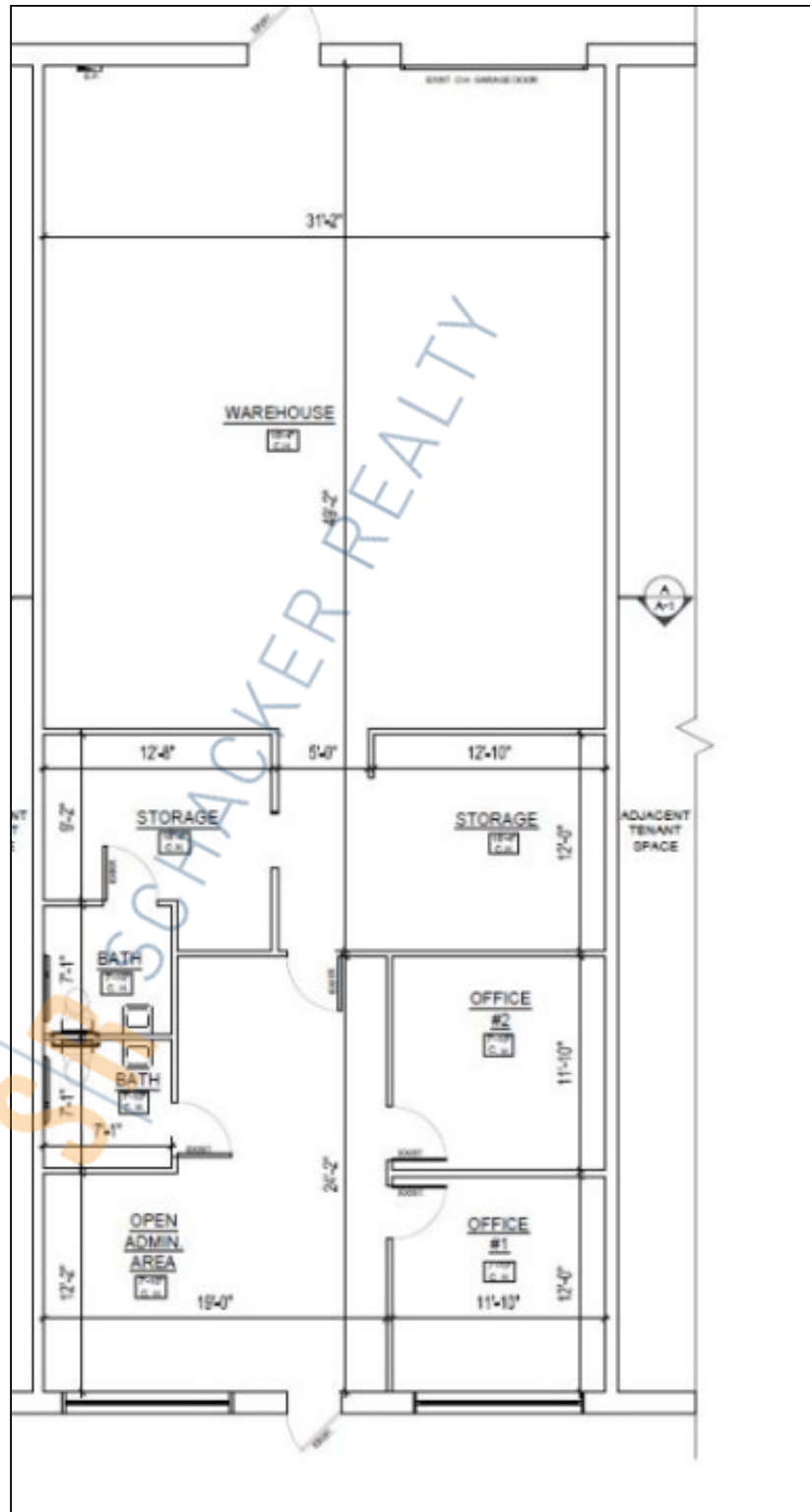
Measurements may be estimates and information shown should not be relied upon without independent verification.

This advertisement does not suggest that the broker has a listing or has done a transaction in this property or properties.



SCHACKER REALTY

1363 Lincoln Ave, Holbrook



**For more information please contact:** Schacker Realty 631-293-3700 [info@schackerrealty.com](mailto:info@schackerrealty.com)

All information is subject to errors, omissions, modification, and withdrawal.

Measurements may be estimates and information shown should not be relied upon without independent verification.

This advertisement does not suggest that the broker has a listing or has done a transaction in this property or properties.