



SCHACKER REALTY

Exclusive Listing

15,120 sq. ft. of Industrial/Manufacturing Space For Lease

Minimum Division 11,371 sq. ft.

590 Oak St, Copiague



Specifications:

Building Size: 32,578 sq. ft.
Lot Size: 1.50 Acres
Office Space: 3,749 sq. ft.
Ceiling Height: 13.0'
Loading: 2 Drive-in(s)
Power: Heavy amps
A/C: Partial A/C
Parking: 18 + Street

Pricing and Timing:

Occupancy: Arranged
Lease Price: \$15.50/sq. ft.
Modified gross

Suite 15k • Manufacturing space • Beautifully finished windowed offices • 3 Private offices, conference room, and bullpen • Very heavy power @480v • Large fenced-in yard

Ralph Perna, Associate RE Broker
516-524-8060 (cell)
631-293-3700 x46
rp@schackerrealty.com

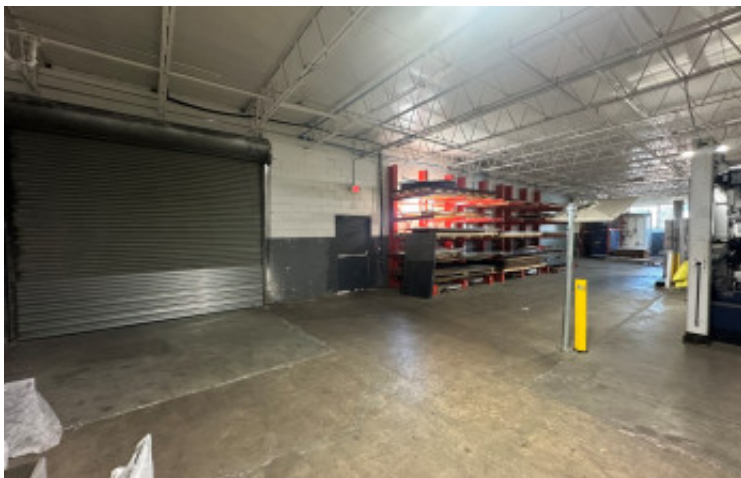
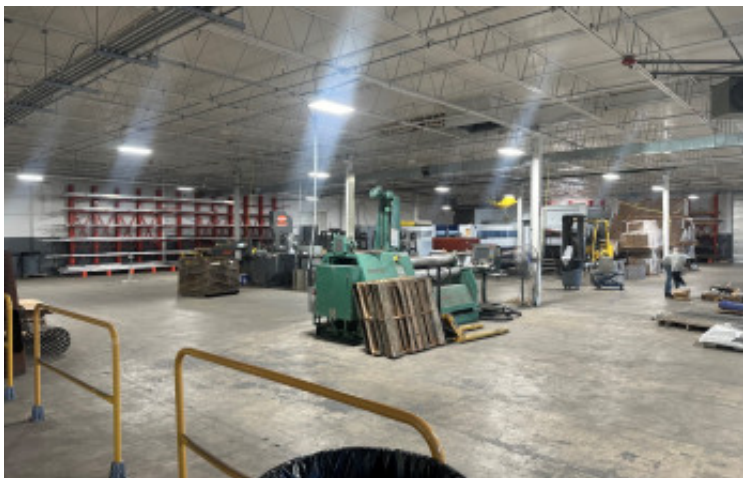
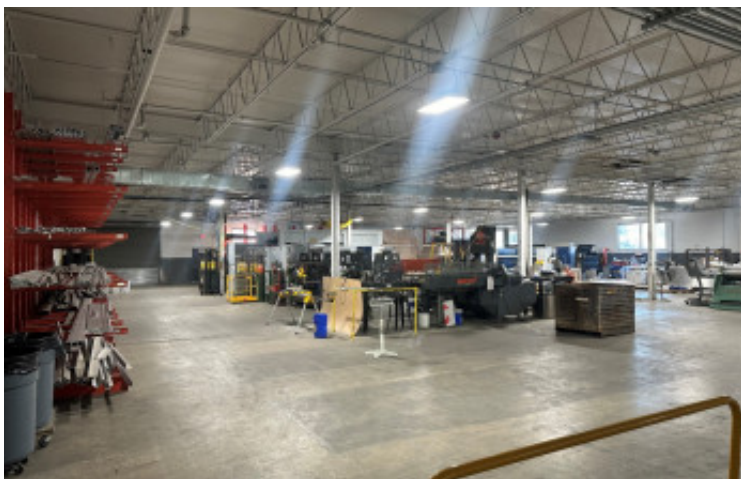
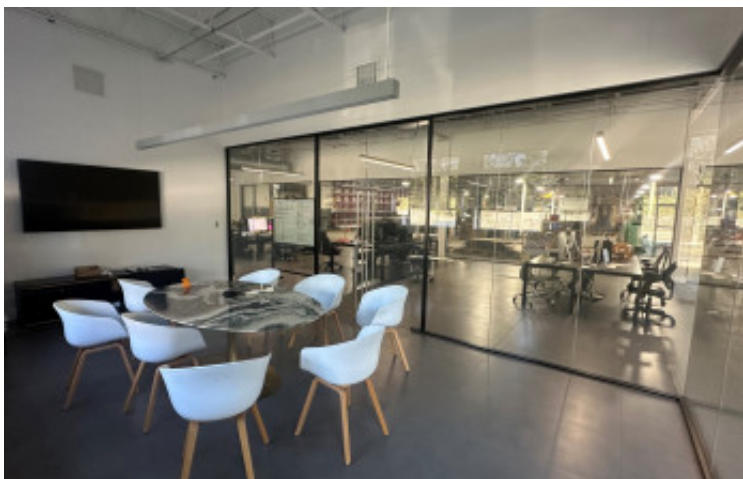
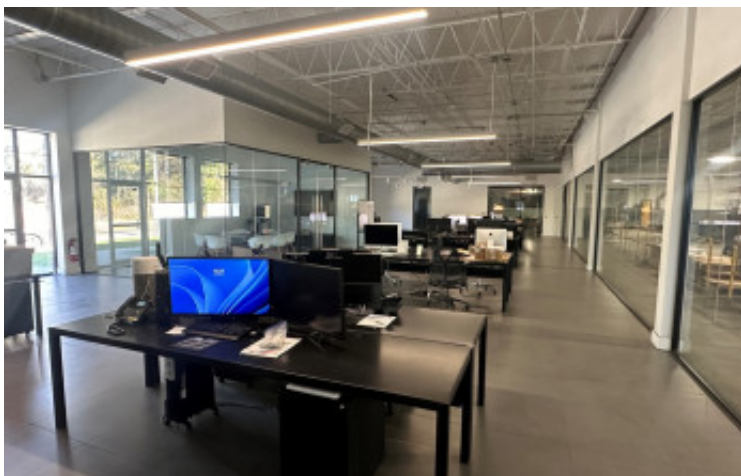
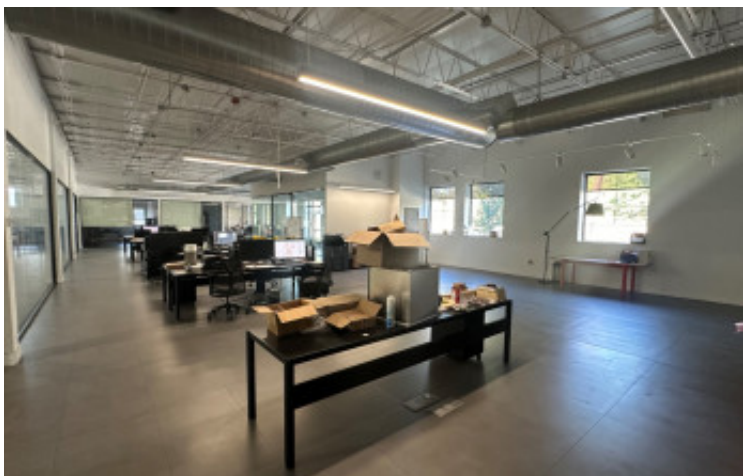
Luca Perinuzzi, RE Salesperson
917-710-3236 (cell)
631-293-3700 x21
lp@schackerrealty.com

All information is subject to errors, omissions, modification, and withdrawal.
Measurements may be estimates and information shown should not be relied upon without independent verification.



SCHACKER REALTY

590 Oak St, Copiague



All information is subject to errors, omissions, modification, and withdrawal.
Measurements may be estimates and information shown should not be relied upon without independent verification.

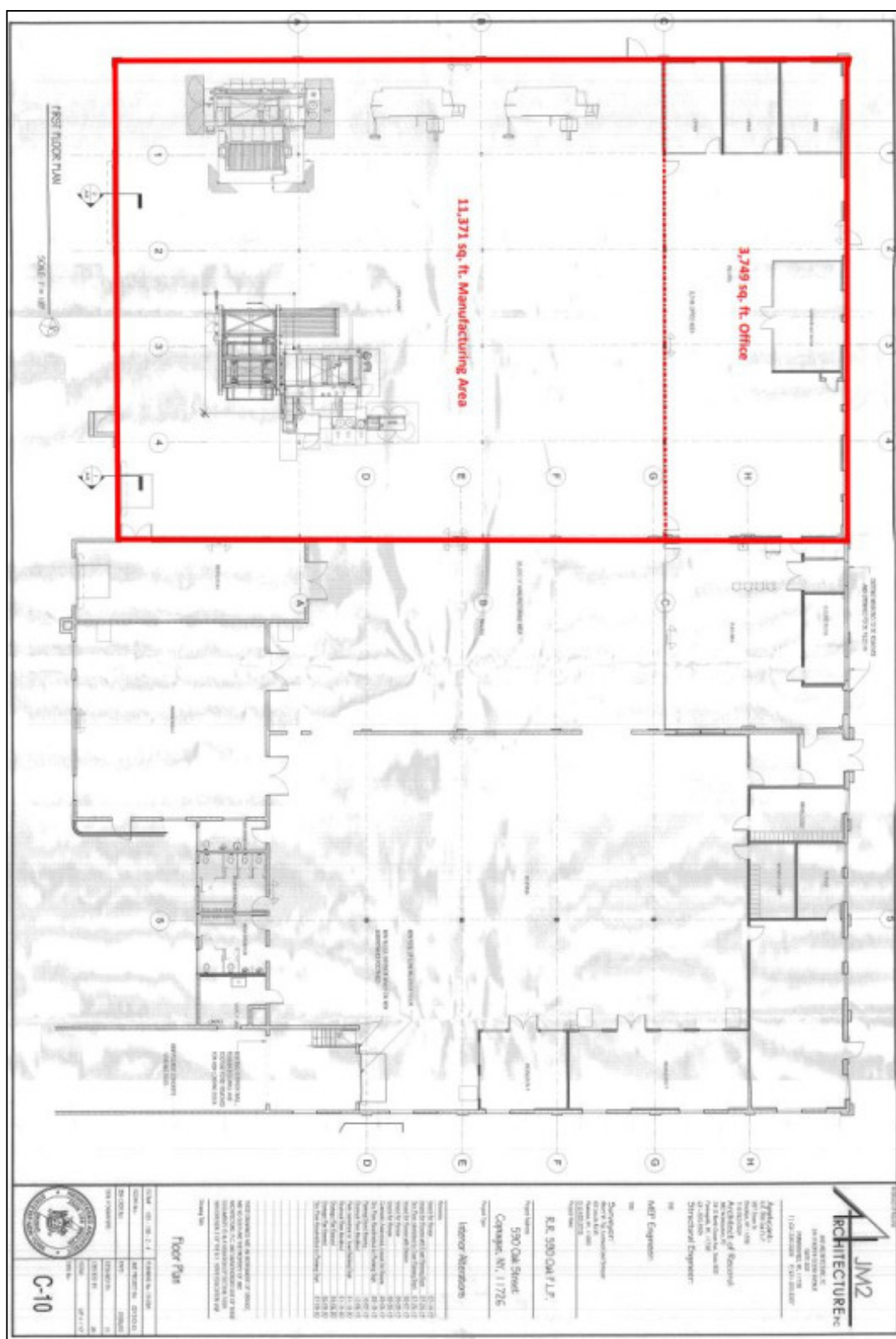


SCHACKER REALTY

590 Oak St, Copiague



All information is subject to errors, omissions, modification, and withdrawal.
Measurements may be estimates and information shown should not be relied upon without independent verification.



All information is subject to errors, omissions, modification, and withdrawal.
Measurements may be estimates and information shown should not be relied upon without independent verification.

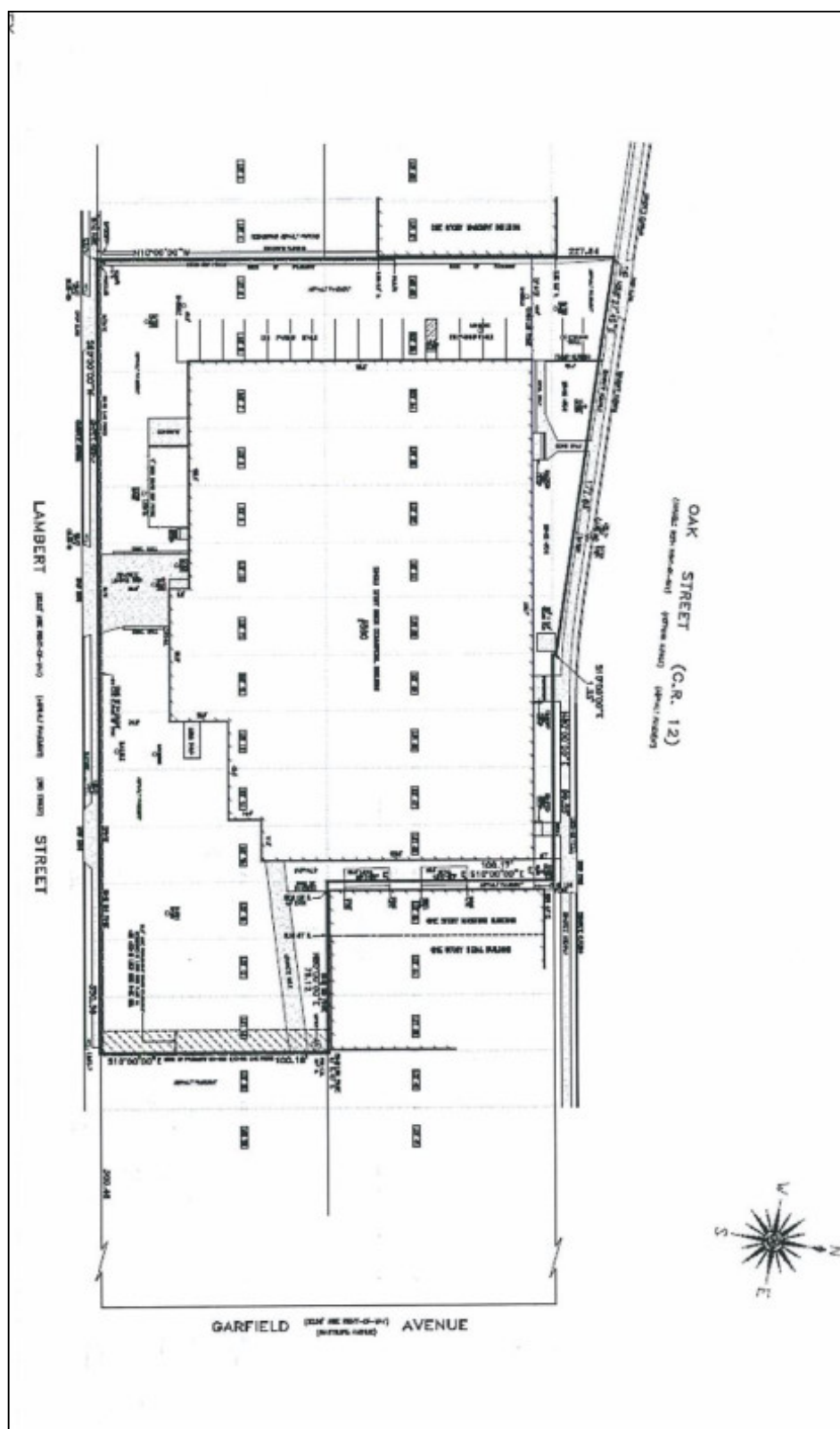


SCHACKER REALTY

590 Oak St, Copiague



All information is subject to errors, omissions, modification, and withdrawal.
Measurements may be estimates and information shown should not be relied upon without independent verification.



All information is subject to errors, omissions, modification, and withdrawal.
Measurements may be estimates and information shown should not be relied upon without independent verification.