



SCHACKER REALTY

101,083 sq. ft. of Office Space For Lease
Minimum Division 1,000 sq. ft.

100 Sunnyside Blvd Ext, Woodbury



Pricing and Timing:

Lease Price: Negotiable

Excellent highway access to the Northern State Parkway, Woodbury Road, and the LIE

For more information please contact: Schacker Realty 631-293-3700 info@schackerrealty.com

All information is subject to errors, omissions, modification, and withdrawal.

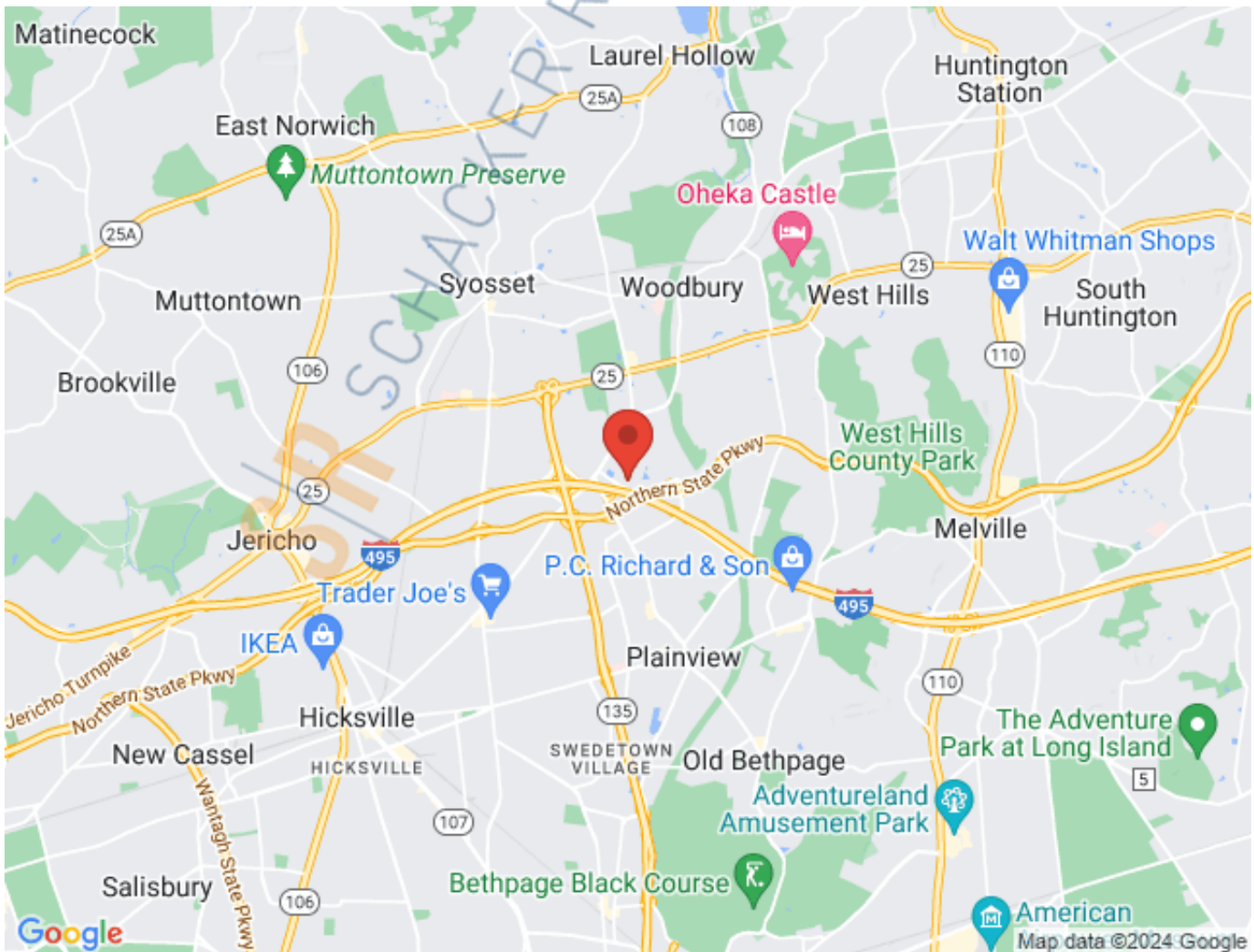
Measurements may be estimates and information shown should not be relied upon without independent verification.

This advertisement does not suggest that the broker has a listing or has done a transaction in this property or properties.



SCHACKER REALTY

100 Sunnyside Blvd Ext, Woodbury

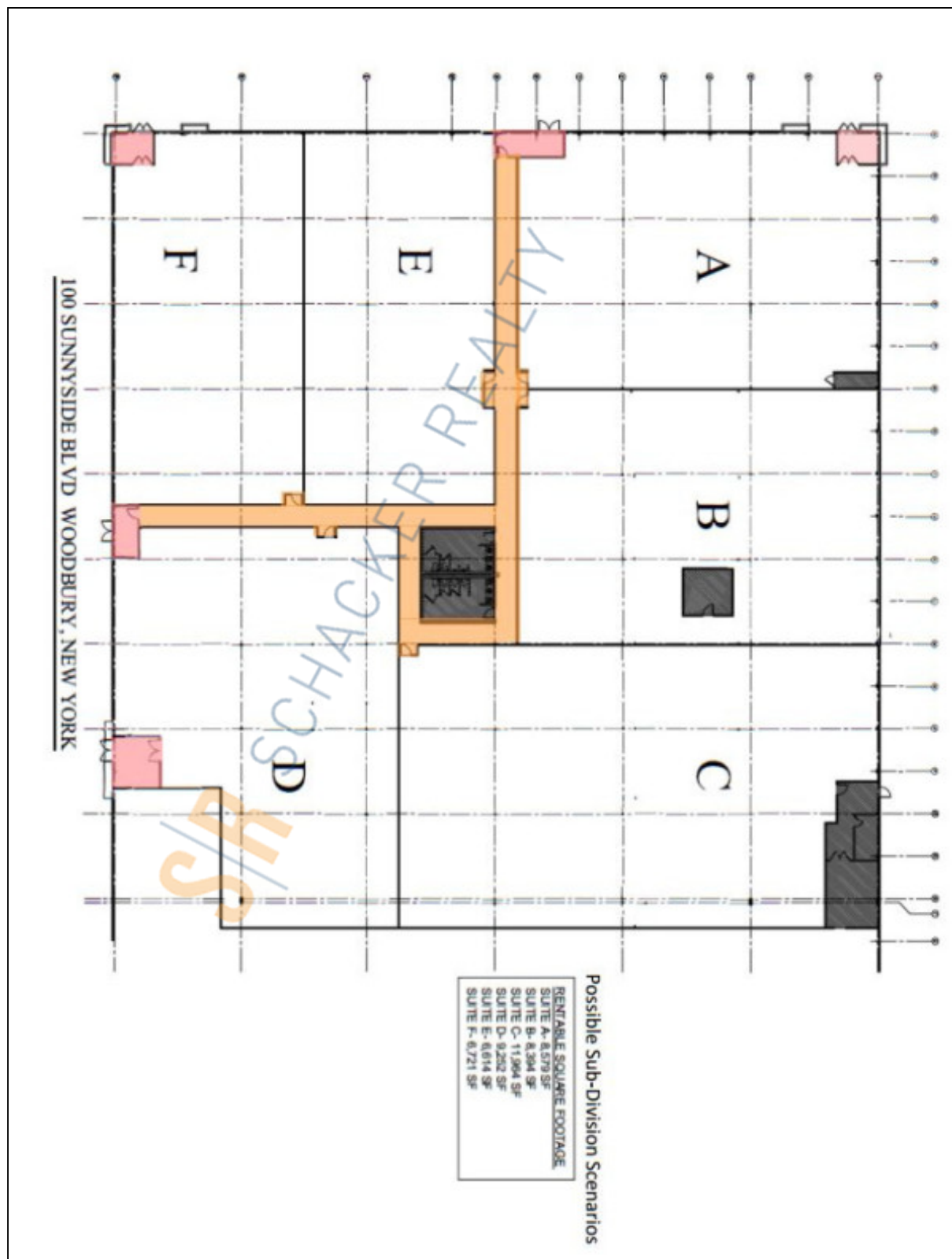


For more information please contact: Schacker Realty 631-293-3700 info@schackerrealty.com

All information is subject to errors, omissions, modification, and withdrawal.

Measurements may be estimates and information shown should not be relied upon without independent verification.

This advertisement does not suggest that the broker has a listing or has done a transaction in this property or properties.



For more information please contact: Schacker Realty 631-293-3700 info@schackerrealty.com

All information is subject to errors, omissions, modification, and withdrawal.

Measurements may be estimates and information shown should not be relied upon without independent verification.

This advertisement does not suggest that the broker has a listing or has done a transaction in this property or properties.



SCHACKER REALTY

100 Sunnyside Blvd Ext, Woodbury



For more information please contact: Schacker Realty 631-293-3700 info@schackerrealty.com

All information is subject to errors, omissions, modification, and withdrawal.

Measurements may be estimates and information shown should not be relied upon without independent verification.

This advertisement does not suggest that the broker has a listing or has done a transaction in this property or properties.