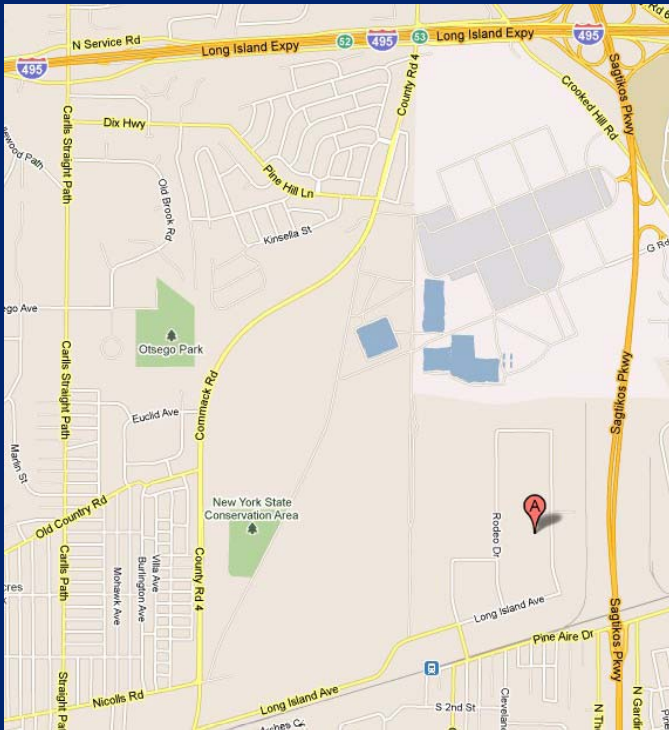


Industrial Space Available For Lease
60 Heartland Blvd., Edgewood, NY

60,000 sq. ft.



- Plot Size:** 4.00 Acres
- Office Space:** 12,000 sq. ft.
- Ceiling Height:** 24'
- Column Span:** 25' x 40'
- Loading:** 4 Loading Docks
2 Drive-in Doors
- Power:** 1,200 Amps
- Sprinklers:** Yes
- A/C:** Partial
- Heating:** Gas
- Parking:** ample
- Lease Price:** TBD

For more information please contact:
 Schacker Real Estate Corp. 631-293-3700
 info@schackerrealty.com

All information is subject to errors, omissions, modification, and withdrawal.

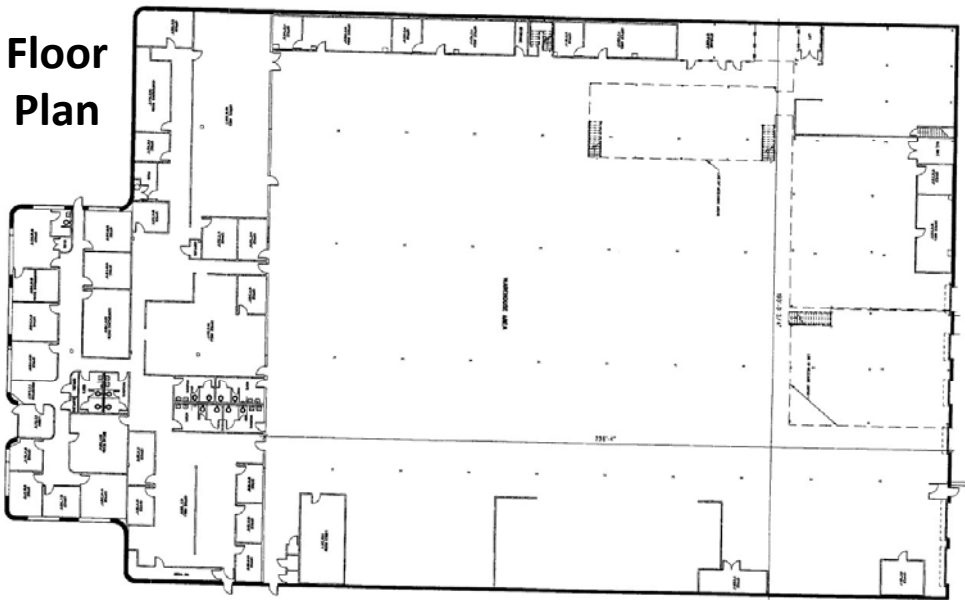
Information is from sources deemed to be reliable but should not be relied upon without independent verification.

Industrial Space Available For Lease
60 Heartland Blvd., Edgewood, NY

60,000 sq. ft.



Floor Plan



For more information please contact:

Schacker Real Estate Corp. 631-293-3700

info@schackerrealty.com

All information is subject to errors, omissions, modification, and withdrawal.

Information is from sources deemed to be reliable but should not be relied upon without independent verification.

Industrial Space Available For Lease
60 Heartland Blvd., Edgewood, NY

60,000 sq. ft.



For more information please contact:

Schacker Real Estate Corp. 631-293-3700

info@schackerrealty.com

All information is subject to errors, omissions, modification, and withdrawal.

Information is from sources deemed to be reliable but should not be relied upon without independent verification.