

Brand New Industrial Building Available For Lease
545 Johnson Avenue, Bohemia, NY

40,000 sq. ft.



Building Specs:

Office Space: Built To Suit
Ceiling Ht: 28'
Power: to suit
Loading: 2 Loading Docks
 1 Drive-in
Sprinklers: Yes
A/C: Built To Suit
Heating: Gas
Parking: 100+ cars

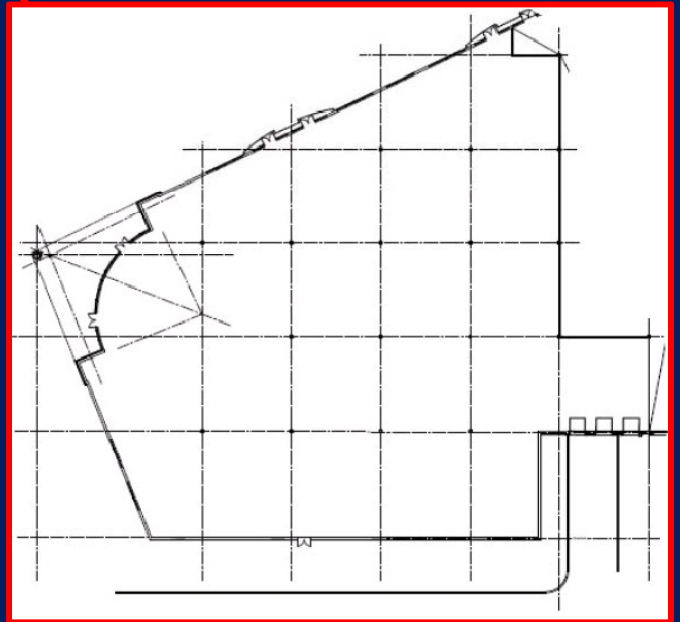
Comments:

New Construction
Landlord will will finish to suit
Divisible
Energy efficient building

Pricing & Taxes:

Lease price: \$7.75/sqft
(Does not include base year taxes which are presently about \$0.30 per sq. ft. due to a tax abatement)
Pricing will vary based on tenant work letter

Brand New Industrial Building Available For Lease 545 Johnson Avenue, Bohemia, NY



For more information please contact:

Schacker Real Estate Corp.

631-293-3700

info@schackerrealty.com

*All information is subject to errors, omissions, modification, and withdrawal.
Information is from sources deemed to be reliable but should not be relied upon without independent verification.*