



25,650 sq. ft. Office/Warehouse Space For Sale 400 Crossways Park Drive, Woodbury, NY



Lot Size: 1.5 Acres

Office Space (Windowed):
4,950 sq. ft.

Warehouse Space:
5,136 sq. ft.

Ceiling Height: 8' - 14'

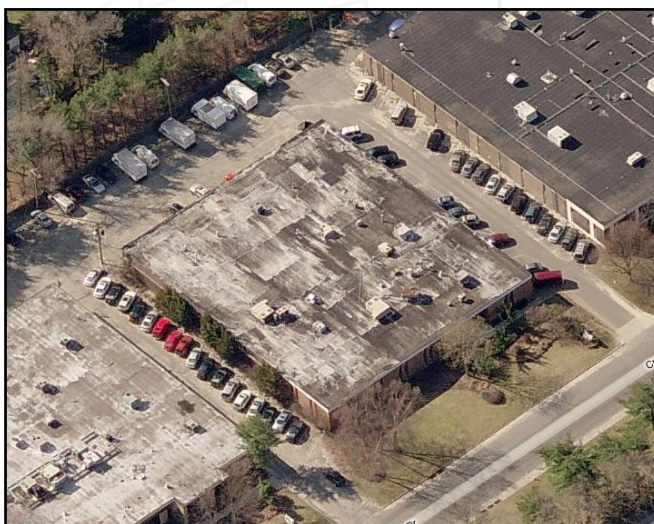
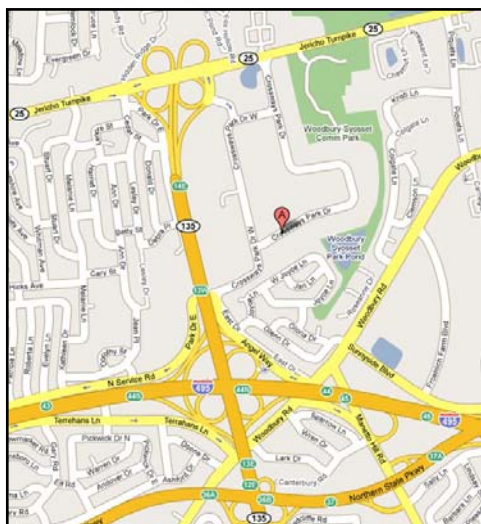
Loading:
4 Drive-in Doors
(according to aerial)

Parking: 65 Cars

Directly off Route 135
Close to LIE and
Northern State Parkway
Park-like setting

Listing/Sale Price:
\$3,200,000 (\$129/sq. ft.)

RE Taxes (2008): \$113,564



Contact: Schacker Realty 631-293-3700

All information is subject to errors, omissions, modification, and withdrawal.

Information is from sources deemed to be reliable but should not be relied upon without independent verification.