



5,050 sq. ft. Retail Space Available For Lease 3025 Hempstead Turnpike, Levittown, NY



5,050 sq. ft. main floor
Fronts Hempstead Turnpike
****HIGH EXPOSURE****

Join Tri-County Flea Market,
Unique Thrift Stores, Planet Fitness

- Front /Rear Entrances
- Fully Air Conditioned
- Gas Heat
- Sprinklered (Wet System)
- Connected to Sewers
- Excellent Parking

Demographics within 3 miles:

Population 182,561
Median household Income \$95,497

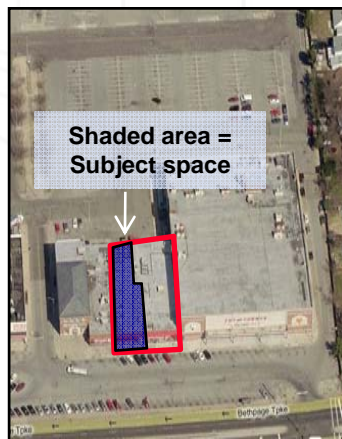
Demographics within 5 miles:

Population 477,169
Median household Income \$100,040

Lease Price

\$22.00/sq. ft.

(includes base year taxes & CAM)



Contact: Lawrence J. Bianco, Executive V.P. 631-293-3700 x43

All information is subject to errors, omissions, changes and withdrawal



3025 Hempstead Turnpike, Levittown, NY

Photos and Floor Plan

Schacker Real Estate ★ Exclusive ★

www.schackerrealty.com



Rear Entrance



Rear Parking Lot

