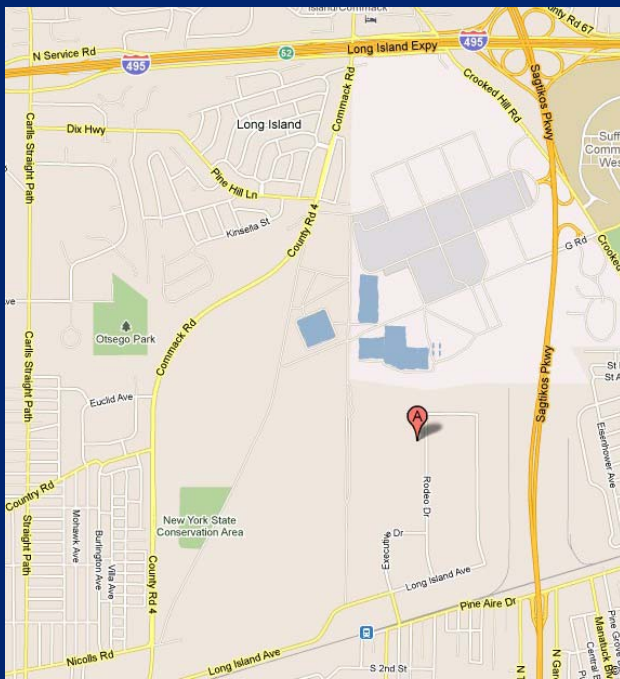


**Free-standing Industrial Building Available For Lease**

**200 Rodeo Drive, Edgewood, NY**

**15,000 sq. ft.**



<b>Land Area:</b>	1.30 Acres
<b>Office Space:</b>	15% (1,450 sf on 2 <sup>nd</sup> floor)
<b>Ceiling Ht:</b>	18'
<b>Loading:</b>	2 Loading Docks 1 Drive-in
<b>Power:</b>	600 Amps
<b>Sprinklers:</b>	Yes
<b>A/C:</b>	Full
<b>Heat:</b>	Gas
<b>Parking:</b>	Ample
<b>Lease price:</b>	\$7.95/sq. ft. <i>(includes base year taxes)</i>

**For more information please contact:**

Schacker Real Estate Corp. 631-293-3700  
info@schackerrealty.com

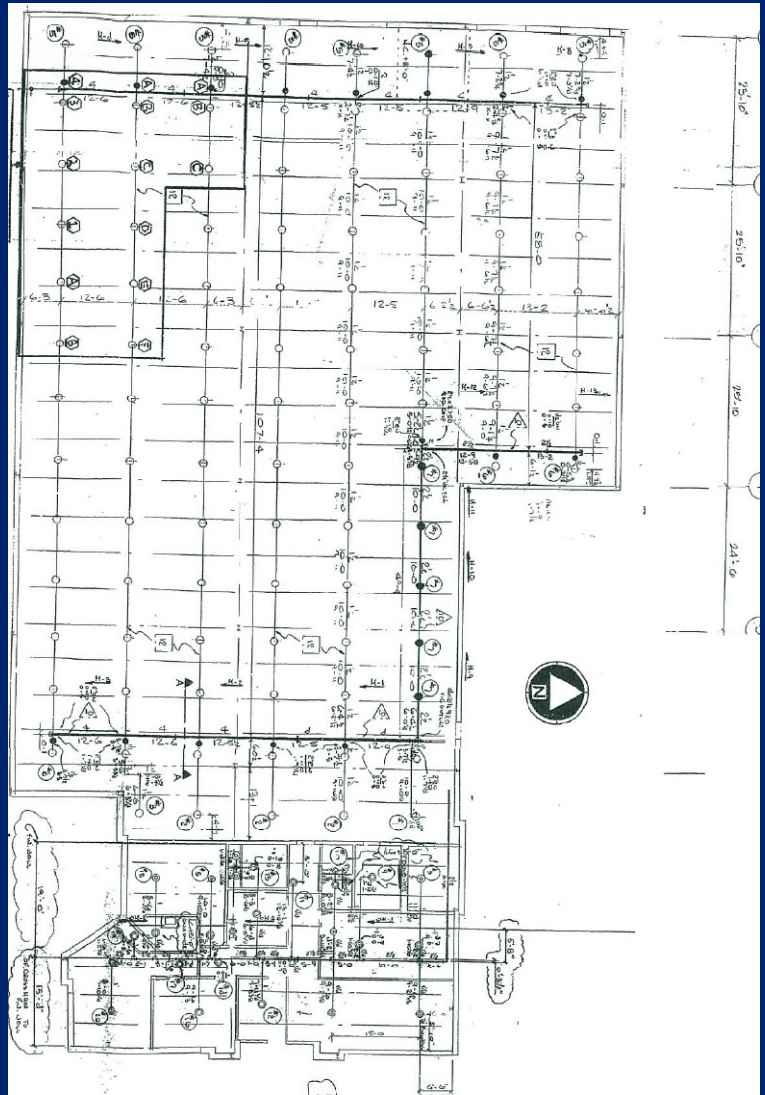
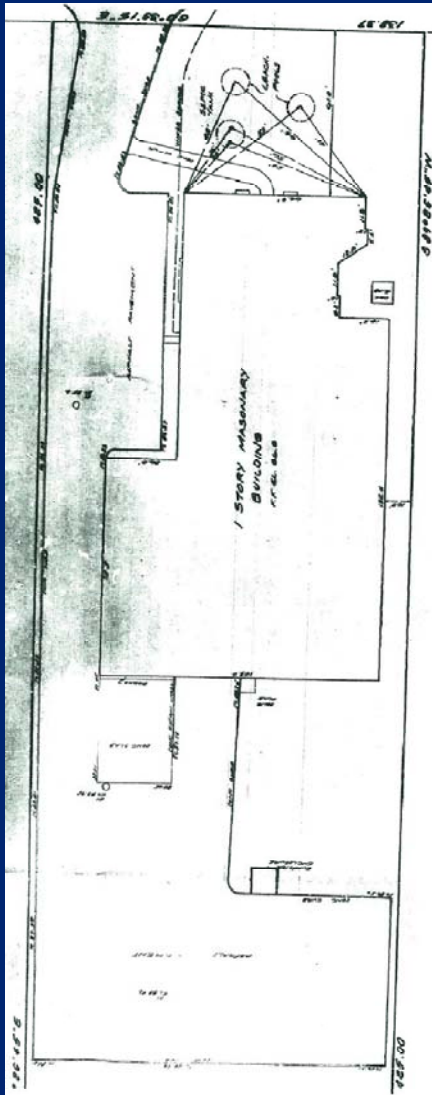
*All information is subject to errors, omissions, modification, and withdrawal.*

*Information is from sources deemed to be reliable but should not be relied upon without independent verification.*

# Free-standing Industrial Building Available For Lease

200 Rodeo Drive, Edgewood, NY

15,000 sq. ft.



**For more information please contact:**

Schacker Real Estate Corp. 631-293-3700

[info@schackerrealty.com](mailto:info@schackerrealty.com)

*All information is subject to errors, omissions, modification, and withdrawal.*

*Information is from sources deemed to be reliable but should not be relied upon without independent verification.*