

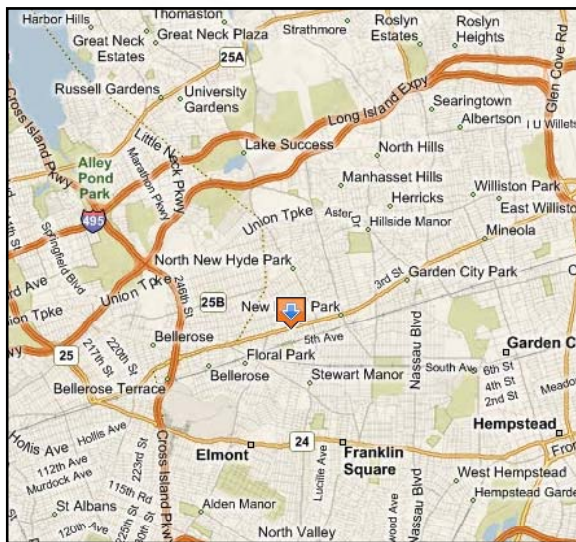
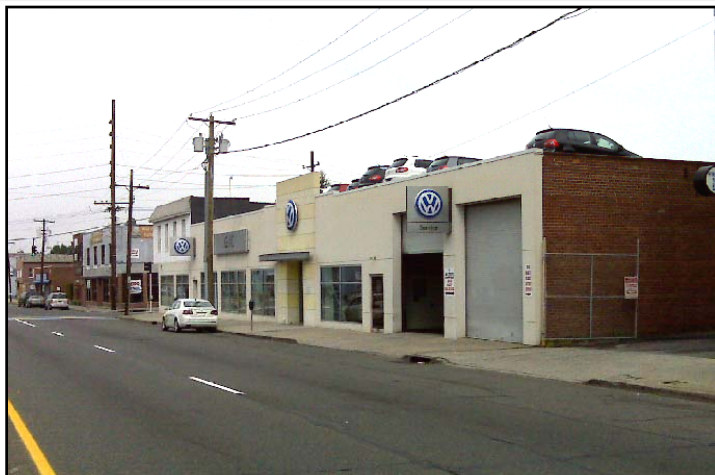


# ±22,000 sq. ft Auto Dealer / Service Building For Lease

## 1 Jericho Turnpike, New Hyde Park, NY

Schacker Real Estate Corp.

www.schackerrealty.com



Building Space:  
±22,000 sq. ft.

Centrally Located in  
Western Nassau --  
Excellent Frontage and  
Visibility on a busy Jericho  
Turnpike corner with  
Traffic Light

Features an 8-Car  
Showroom, Offices, Parts  
Desk, Service Department,  
Customer Lounge

Zoned for Auto Service

Outdoor Lot and Rooftop  
Vehicle Storage

Oil and Gas Heat

Lease Price:  
\$13.00 per sq. ft.  
(Does not include real estate  
taxes, currently \$4.70 per sq. ft.)

Lease Term:  
10+ years

**Contact: Schacker Realty, 631-293-3700**

*All information is subject to errors, omissions, changes and withdrawal*